

Anti-DPP4 mIgG2b Antibody(begelomab)

Product information

GM-76996AB-10	10 µg
GM-76996AB-100	100 µg
GM-76996AB-1000	1 mg

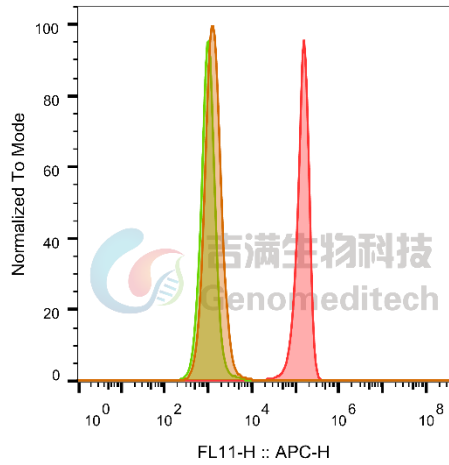
Antibody Information

Species Reactivity	Human;
Clone	begelomab
Source/Isotype	Monoclonal mouse IgG2b, κ
Application	Flow cytometry
Specificity	Detects DPP4
Gene	DPP4
Other Names	ADABP, ADCP2, CD26, DPPIV, TP103
Gene ID	1803 (human)
Background	The DPP4 gene encodes dipeptidyl peptidase 4, which is identical to adenosine deaminase complexing protein-2, and to the T-cell activation antigen CD26. It is an intrinsic type II transmembrane glycoprotein and a serine exopeptidase that cleaves X-proline dipeptides from the N-terminus of polypeptides. Dipeptidyl peptidase 4 is highly involved in glucose and insulin metabolism, as well as in immune regulation. This protein was shown to be a functional receptor for Middle East respiratory syndrome coronavirus (MERS-CoV), and protein modeling suggests that it may play a similar role with SARS-CoV-2, the virus responsible for COVID-19.
Storage	Store at 2-8°C short term (1-2 weeks).Store at ≤ -20°C long term. Avoid repeated freeze-thaw.
Formulation	Phosphate-buffered solution, pH 7.2.
Endotoxin	< 1 EU/mg, determined by LAL gel clotting assay

Data Examples

Flow cytometry

H_DPP4 HEK-293T Cell Line (Catalog # GM-C33028) was stained with Anti-DPP4 mIgG2b Antibody(begelomab) (Catalog # GM-76996AB) or isotype control antibody, followed by anti-Human IgG APC-conjugated Secondary Antibody.



SampleID	Geometric Mean : FL11-H
HEK-293T anti-DPP4+APC-2nd Ab	1320
HEK-293T H_DPP4 H_IgG+APC-2nd Ab	1015
HEK-293T H_DPP4 anti-DPP4+APC-2nd Ab	141996

Fig. FACS